

DT 32/2



∅ 50mm

DT 32/2-050

Code: 1722100010 **L** 500mm **KG** 1,7

DT 32/2-100

Code: 1722100011 **L** 1000mm **KG** 2,6

DT 32/2-150

Code: 1722100012 **L** 1500mm **KG** 3,5

DT 32/2-200

Code: 1722100013 **L** 2000mm **KG** 4,5

DT 32/2-250

Code: 1722100014 **L** 2500mm **KG** 5,5

DT 32/2-300

Code: 1722100015 **L** 3000mm **KG** 6,5

DT 32/2-350

Code: 1722100016 **L** 3500mm **KG** 7,5

DT 32/2-400

Code: 1722100017 **L** 4000mm **KG** 8,4



TECHNICAL DATA

Tube diameter: 50mmx2mm (2 x 0.08 inch)
 Cross brace diameter: 20mmx2mm (0.8 x 0.08 inch)
 Material: Alloy EN-AW 6082 T6 (AlMgSi1 T6)

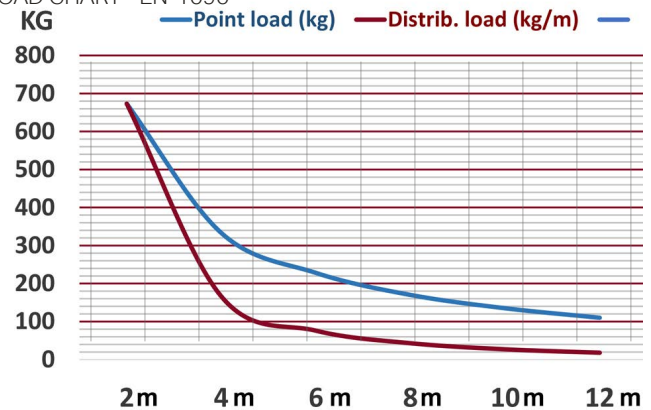


LOAD CHART - EN-1090

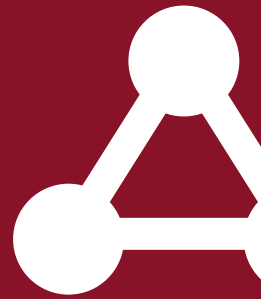
Compressed chord needs a horizontal support every 1,0 m. (stability request)

Length (m)	2	4	6	8	10	12
Point load (kg)	673	333	228	170	135	110
Deflection (mm)	1,9	7,4	17,6	32,3	52,2	110
Distrib. load (kg/m)	673	166	76	43	27	18
Deflection (mm)	2,3	9,3	21,9	39,8	63,7	94,0

LOAD CHART - EN-1090

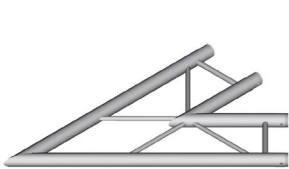


TWO TUBE SYSTEM



DT 32/2-C19H-L45

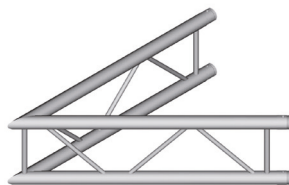
CODE: 1722200021



2 way corner 45° horizontal
L 1000mm **W** 1000mm **H** 50mm
α 45° **KG** 3,3

DT 32/2-C19V-L45

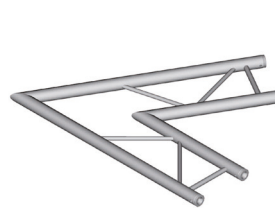
CODE: 1722200022



2 way corner 45° vertical
L 1000mm **W** 1000mm **H** 290mm
α 45° **KG** 3,5

DT 32/2-C20H-L60

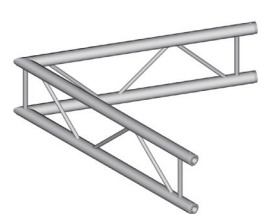
CODE: 1722200023



2 way corner 60° horizontal
L 1000mm **W** 1000mm **H** 50mm
α 60° **KG** 3,4

DT 32/2-C20V-L60

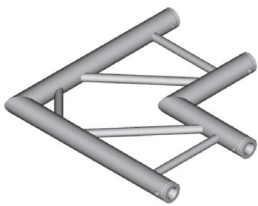
CODE: 1722200024



2 way corner 60° vertical
L 1000mm **W** 1000mm **H** 290mm
α 60° **KG** 3,6

DT 32/2-C21H-L90

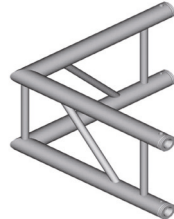
CODE: 1722200025



2 way corner 90° horizontal
L 500mm **W** 500mm **C** 50mm
α 90° **KG** 2,3

DT 32/2-C21V-L90

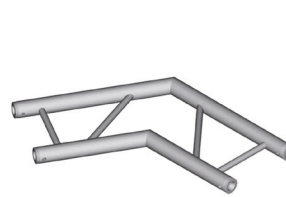
CODE: 1722200026



2 way corner 90° vertical
L 500mm **W** 500mm **H** 290mm
α 90° **KG** 2,5

DT 32/2-C22H-L120

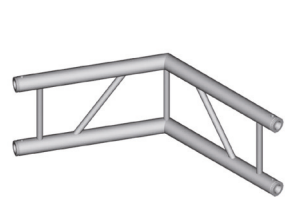
CODE: 1722200027



2 way corner 120° horizontal
L 500mm **W** 500mm **H** 50mm
α 120° **KG** 2,6

DT 32/2-C22V-L120

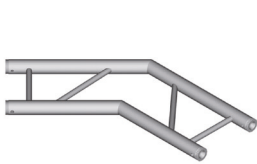
CODE: 1722200028



2 way corner 120° vertical
L 500mm **W** 500mm **H** 290mm
α 120° **KG** 2,8

DT 32/2-C23H-L135

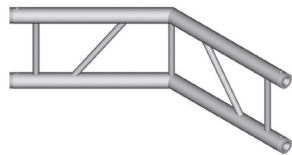
CODE: 1722200030



2 way corner 135° horizontal
L 500mm **W** 500mm **H** 50mm
α 135° **KG** 2,8

DT 32/2-C23V-L135

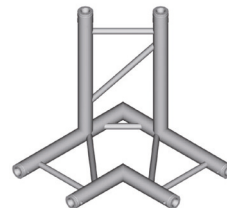
CODE: 1722200029



2 way corner 135° vertical
L 500mm **W** 500mm **H** 290mm
α 135° **KG** 2,7

DT 32/2-C31H-LD90

CODE: 1722200032



3 way corner 90° + down horizontal
L 500mm **W** 500mm **H** 500mm
α 90° **KG** 3,8

DT 32/2-C31V-LD90

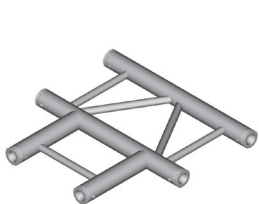
CODE: 1722200033



3 way corner 90° + down vertical
L 500mm **W** 500mm **H** 500mm
α 90° **KG** 3,8

DT 32/2-T36H-T

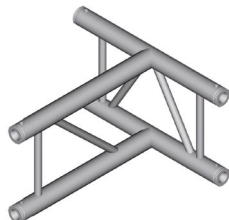
CODE: 1722200034



3 way T-joint horizontal
L 500mm **W** 500mm **H** 50mm
α 90° **KG** 3,2

DT 32/2-T36V-T

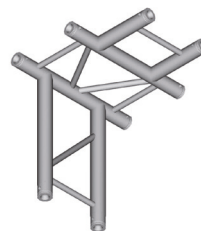
CODE: 1722200035



3 way T-joint vertical
L 500mm **W** 500mm **H** 290mm
α 90° **KG** 1,6

DT 32/2-T42H-TD

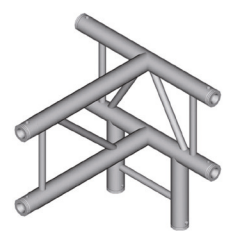
CODE: 1722200036



4 way T-joint + down horizontal
L 500mm **W** 500mm **H** 500mm
α 90° **KG** 4,4

DT 32/2-T42V-TD

CODE: 1722200037

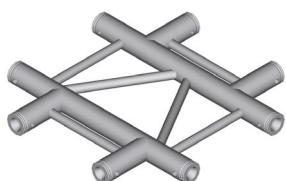


4 way T-joint + down vertical
L 500mm **W** 500mm **H** 500mm
α 90° **KG** 4,4

DT 32/2

DT 32/2-C41HX

CODE: 1722200038

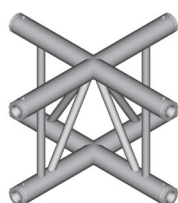


4 way X-joint horizontal

L 500mm **W** 500mm **H** 50mm
KG 4,0

DT 32/2-C41VX

CODE: 1722200039

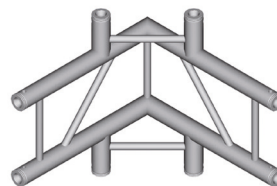


4 way X-joint vertical

L 500mm **W** 500mm **H** 290mm
KG 3,8

DT 32/2-C44V

CODE: 1722200040

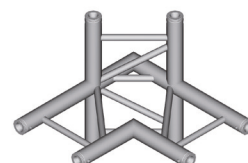


4 way corner 90° vertical

L 500mm **W** 500mm **H** 500mm
KG 4,4

DT 32/2-C44H

CODE: 1722200031

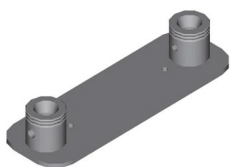


4 way corner 90° horizontal

L 500mm **W** 500mm **H** 500mm
KG 4,4

DT 32-WPF

CODE: 1722400003

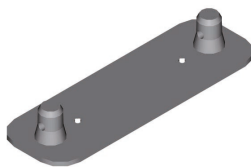


wall plate female

L 310mm **W** 100mm **C** 5mm
KG 0,9

DT 32-WPM

CODE: 1722400004

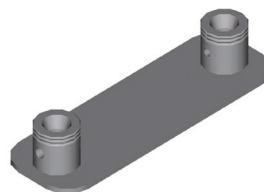


wall plate male

L 310mm **W** 100mm **H** 5mm
KG 0,9

DT 32-BPF

CODE: 1722400002

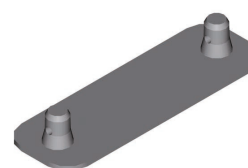


base plate female

L 310mm **W** 100mm **H** 5mm
KG 0,9

DT 32-BPM

CODE: 1722400001



base plate male

L 310mm **W** 100mm **H** 5mm
KG 0,9

DT 30/40-STEEL PIN-M8

CODE: 1749000007



for DT 31 -> 44

DT 30/40-SHORT PIN

CODE: 1749000013



for DT 31 -> 44

DT 30/40-CC

CODE: 1723400008



for DT 31 -> 44

DT 30/40-TERMINAL PIECE

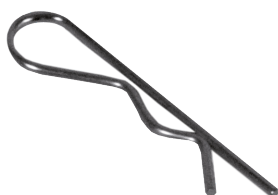
CODE: 1749000008



for DT 31 -> 44

DT 20/40-SAFETY CLIP

CODE: 1744000010



for DT 22 -> 44

DT 30/40-STEEL PIN

CODE: 1749000006



for DT 31 -> 44

DT CUBE 1

CODE: 1720000008



for DT 31 -> 44

L 50mm **W** 50mm **H** 50mm
KG 0,1

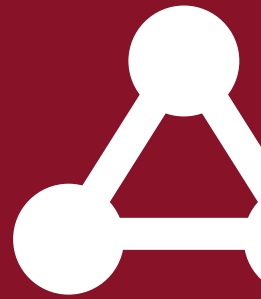
DT HC-CUBE 1

CODE: 1710000012

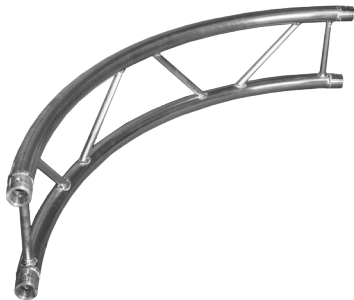


incl. M 10 bolt, pin, clip

TWO TUBE SYSTEM



DT 32/2-CIRCLE VERTICAL



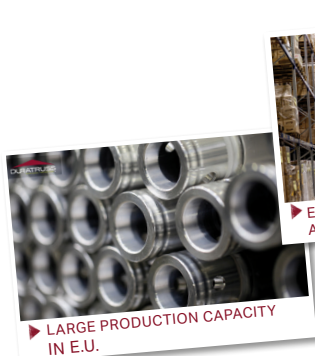
Model Construction	Code	Number of parts:
DT 32/2V-Circle Part-2m-90dgr	1722300015	1 circle is 4 parts
DT 32/2V-Circle Part-3m-90dgr	1722300016	1 circle is 4 parts
DT 32/2V-Circle Part-4m-90dgr	1722300017	1 circle is 4 parts
DT 32/2V-Circle Part-5m-45dgr	1722300018	1 circle is 8 parts
DT 32/2V-Circle Part-6m-45dgr	1722300019	1 circle is 8 parts
DT 32/2V-Circle Part-7m-45dgr	1722300020	1 circle is 8 parts
DT 32/2V-Circle Part-8m-45dgr	1722300021	1 circle is 8 parts

DT 32/2-CIRCLE HORIZONTAL



Model Construction	Code	Number of parts:
DT 32/2H-Circle Part-2m-90dgr	1722300022	1 circle is 4 parts
DT 32/2H-Circle Part-3m-90dgr	1722300023	1 circle is 4 parts
DT 32/2H-Circle Part-4m-90dgr	1722300024	1 circle is 4 parts
DT 32/2H-Circle Part-5m-45dgr	1722300025	1 circle is 8 parts
DT 32/2H-Circle Part-6m-45dgr	1722300026	1 circle is 8 parts
DT 32/2H-Circle Part-7m-45dgr	1722300027	1 circle is 8 parts
DT 32/2H-Circle Part-8m-45dgr	1722300028	1 circle is 8 parts

Your strong partner for strong business!



TRUSSING | COUPLER | FABRICS | STAGE

DuraTruss B.V. 6468 EW Kerkrade
Junostraat 2 The Netherlands

www.duratruss.eu